



Stackable Battery -V (Low Volt)

Quick Installation Manual

Installation Environment



Max.+50°C



Min.-10°C



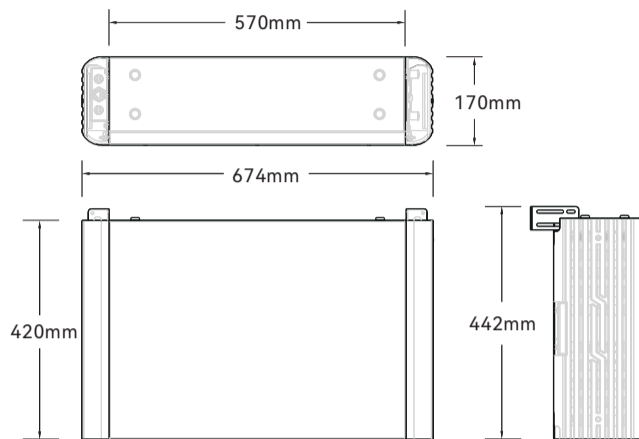
RH.+5%~95%

Installation Tools

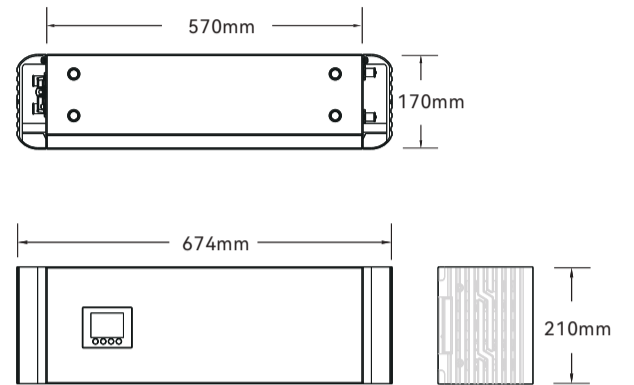


System Size

Battery Module

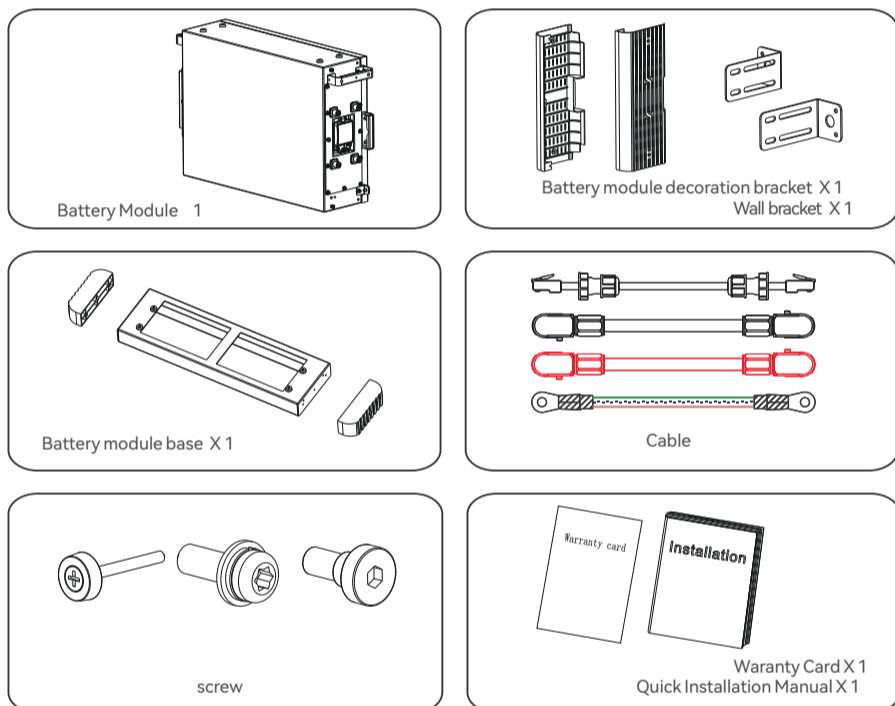


Combiner Box

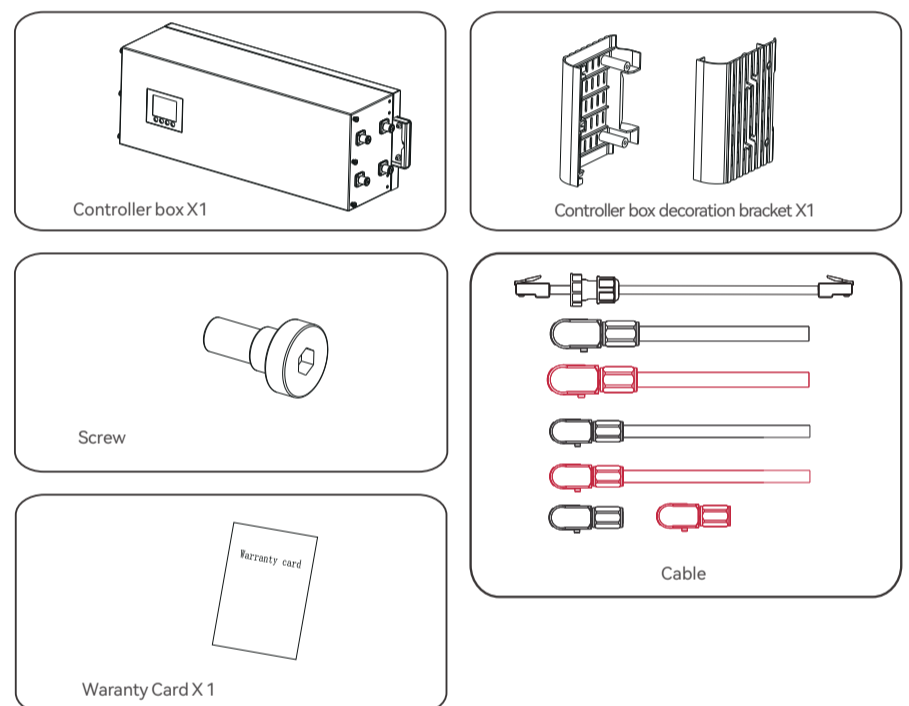


1 Check

1-1 Battery Module Parts

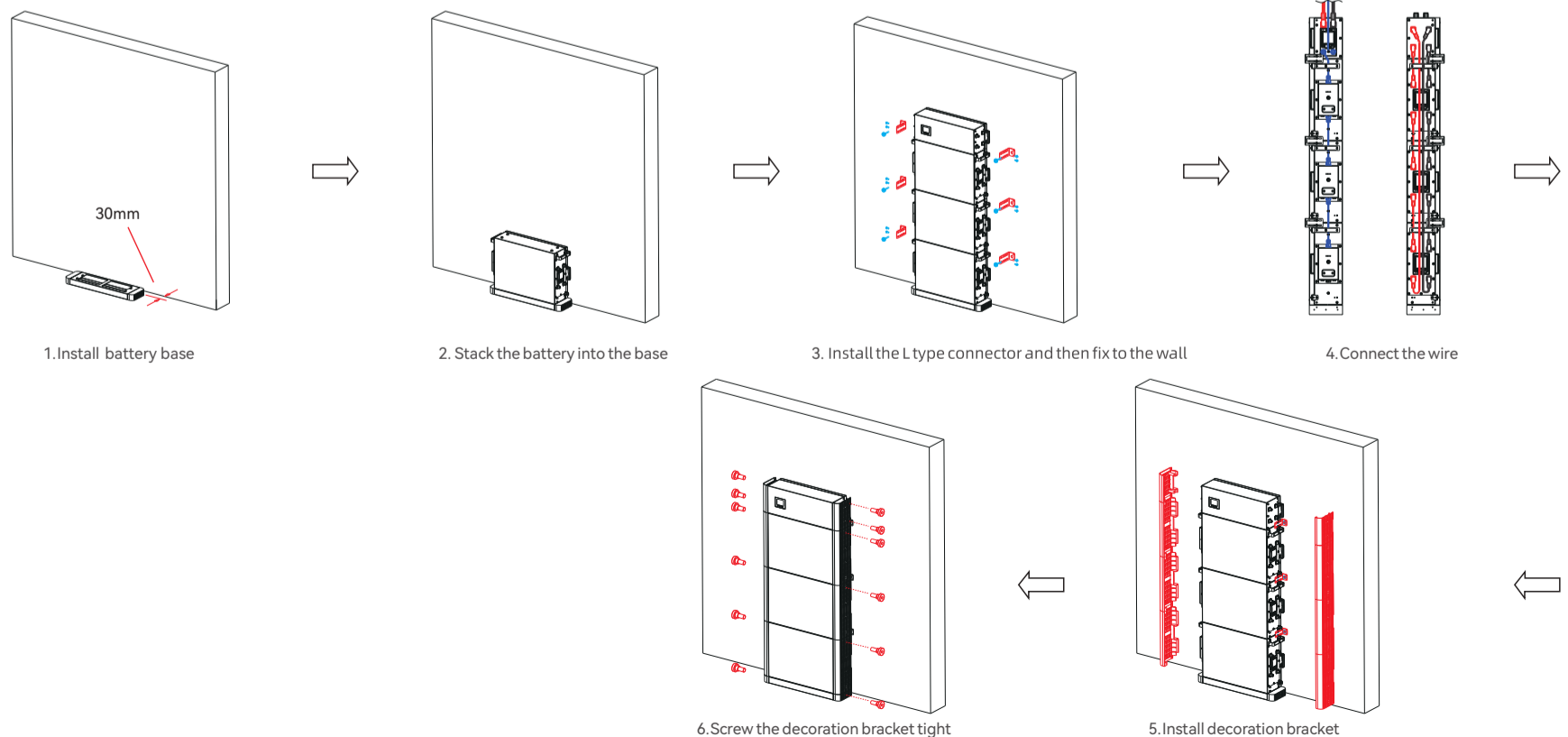


1-2 Combiner Box Parts



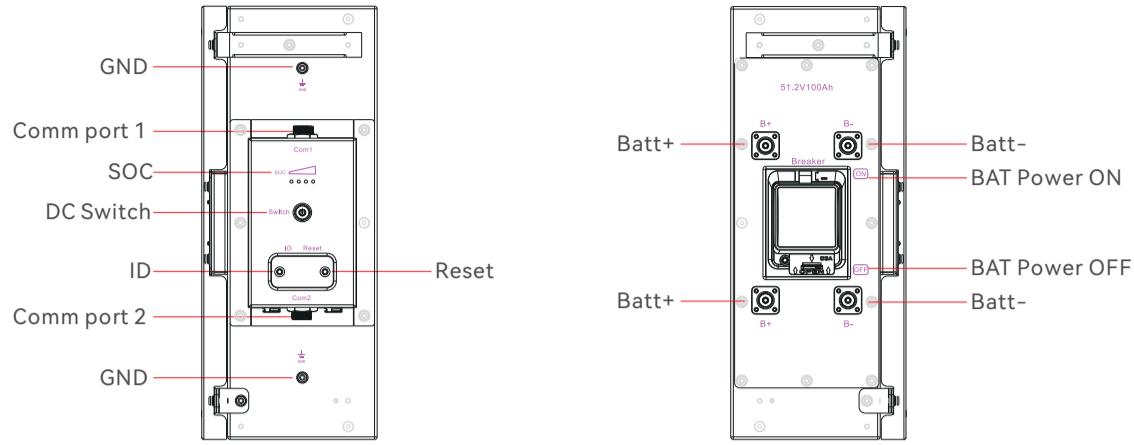
2 Floor installation with base

2-1 Installation Procedure

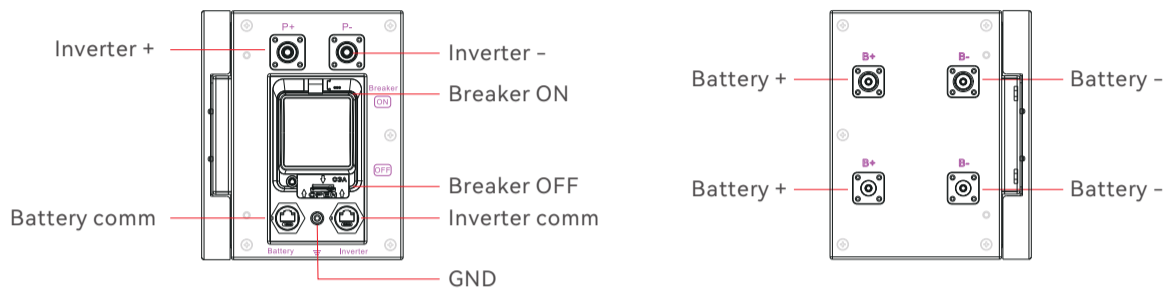


3 Wire Connection

3-1 Battery Module Connection interface introduction

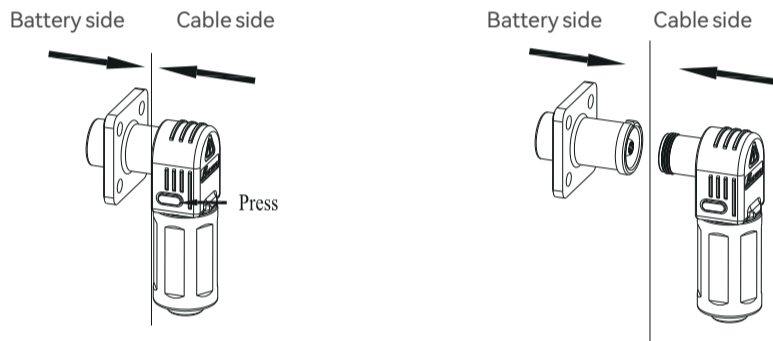


3-2 Combiner box Connection interface introduction



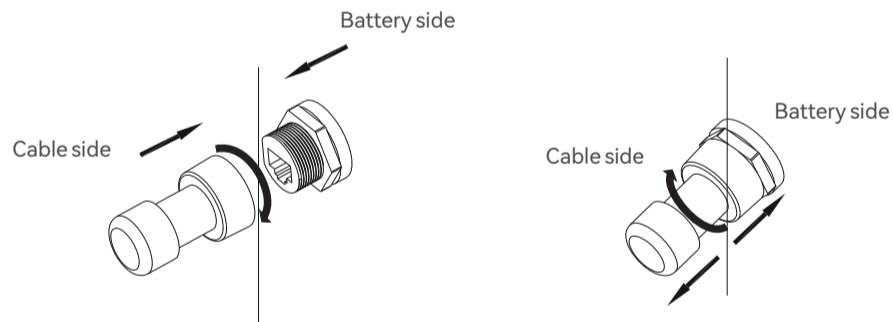
4 Terminal Connection

4-1 Power terminal

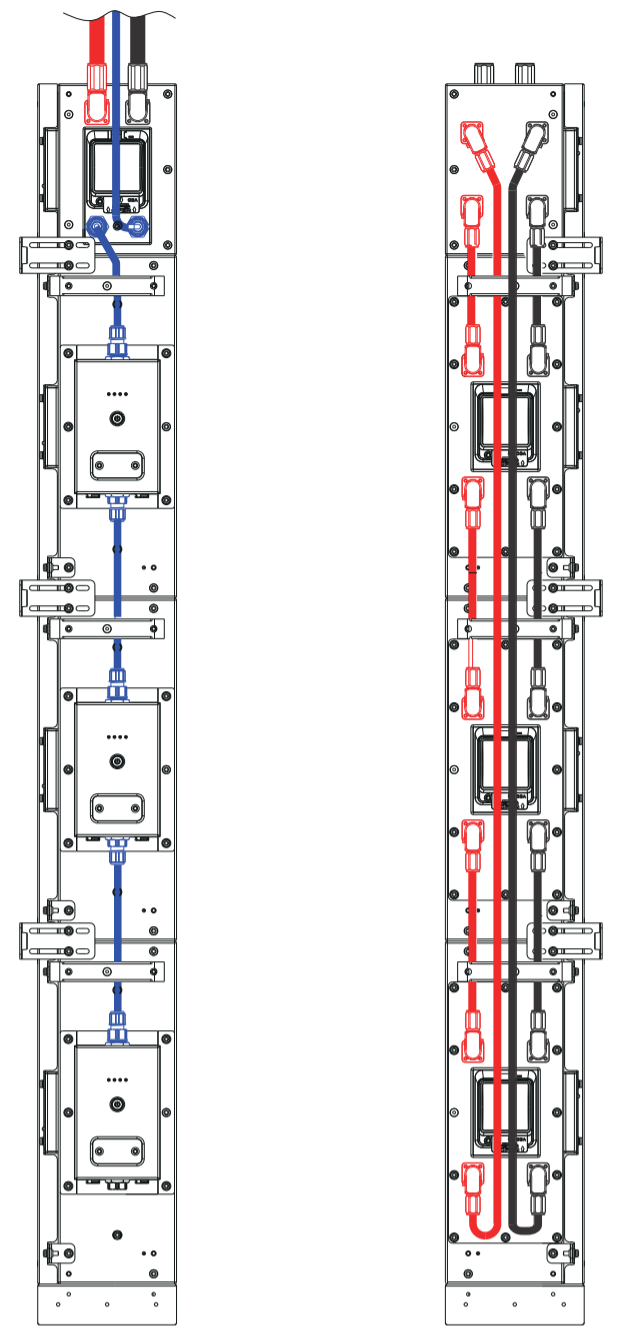


NOTE: Press the button as illustrated in the picture before disconnecting the power terminal.

4-2 Communication terminal



3-3 Diagram of wiring connection



Shenzhen Enershare Technology Co.,Ltd

0086-755-28718021

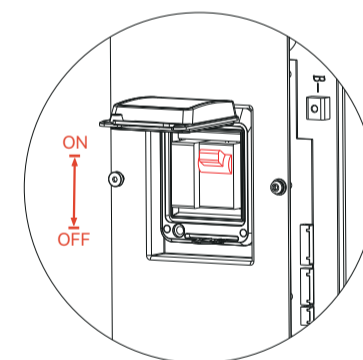
wesley.yan@enershare.cn

<https://www.enershare.cn>

Huitong Building, No.10 Longgang Rd, Longgang District, Shenzhen, Guangdong, China.

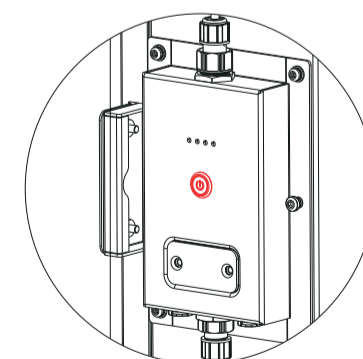
5 Battery system Power ON/OFF operation

Power ON battery system



Turn the breaker to the "ON" position, press the DC POWER button for 5-6 seconds, wait for the battery system LED light to light up, indicating that the boot is complete.

Power OFF battery system



Turn the breaker to "OFF" position to turn off the entire battery system.

6 DC Power Button

Situation

Touch

Definition

System off

Press(≥5s)

Power on

